

January 2025

Western Corridor Road Upgrade

City of Newcastle (CN) has contracted Daracon to undertake the Western Corridor Road Upgrade, to improve safety and ease congestion in the growing western corridor.

What work are we doing?

Upcoming work to be carried out during February includes:

- Survey
- Utility service investigations and commencement of services relocations
- Establishment of site compounds on John Street and Maryland Drive
- Installation of traffic controls and signage
- Clearing of vegetation (further notification will be provided before commencement)
- Preparation and foundation work for the retaining walls at the intersection of Summerhill Road and Minimi Road, on Minmi Road near Anna Place and on Minmi Road near McNaughton Avenue

When and where we'll be working

We will be working on Longworth Avenue between the roundabout with Newcastle Road and the just beyond Sandgate Road and on Minmi Road from beyond the traffic signals with Maryland Drive to past the roundabout with Summerhill Road. We have enclosed a map showing the location of the work.

Normal working hours are between **7am and 6pm on weekdays** and **8am and 1pm on Saturdays**.

For the safety of motorists and our workers we need to complete some construction activities out of hours. Our night work hours are from **8pm to 5am Monday to Friday**. However, our work crews may be on site from 6pm to prepare for the shift and set up safety equipment.

The following table provides further information about out of hours work planned **from Monday 3 February to Friday 28 February 2025**, weather permitting.

Location	Activity	Duration	Equipment
Longworth Avenue near the intersection of Cowper and Cameron Streets	Road crossing for utility relocation	Up to 10 nights	Non-Destructive digging truck, trucks excavator, lighting towers, light vehicles.
Along Longworth Avenue and Minmi Road within the project	Utilities investigation	Up to 10 nights	Non-Destructive Digging Truck, Small Excavator, lighting towers, light vehicles.
Along Longworth Avenue and Minmi Road within the project	Clearing where trees are within proximity to the road	Up to 10 nights	Chainsaw, trucks, elevated work platform, lighting towers, light vehicles.
Minimi Road, near the intersection of Summer Hill Road	Removal of median island	Up to 5 nights	Saw-cutting machinery, excavator, trucks, lighting towers, light vehicles

What will this mean for you?

You may notice:

- Workers and vehicles
- Lane closures and traffic control
- Noise from machinery and equipment

Traffic changes

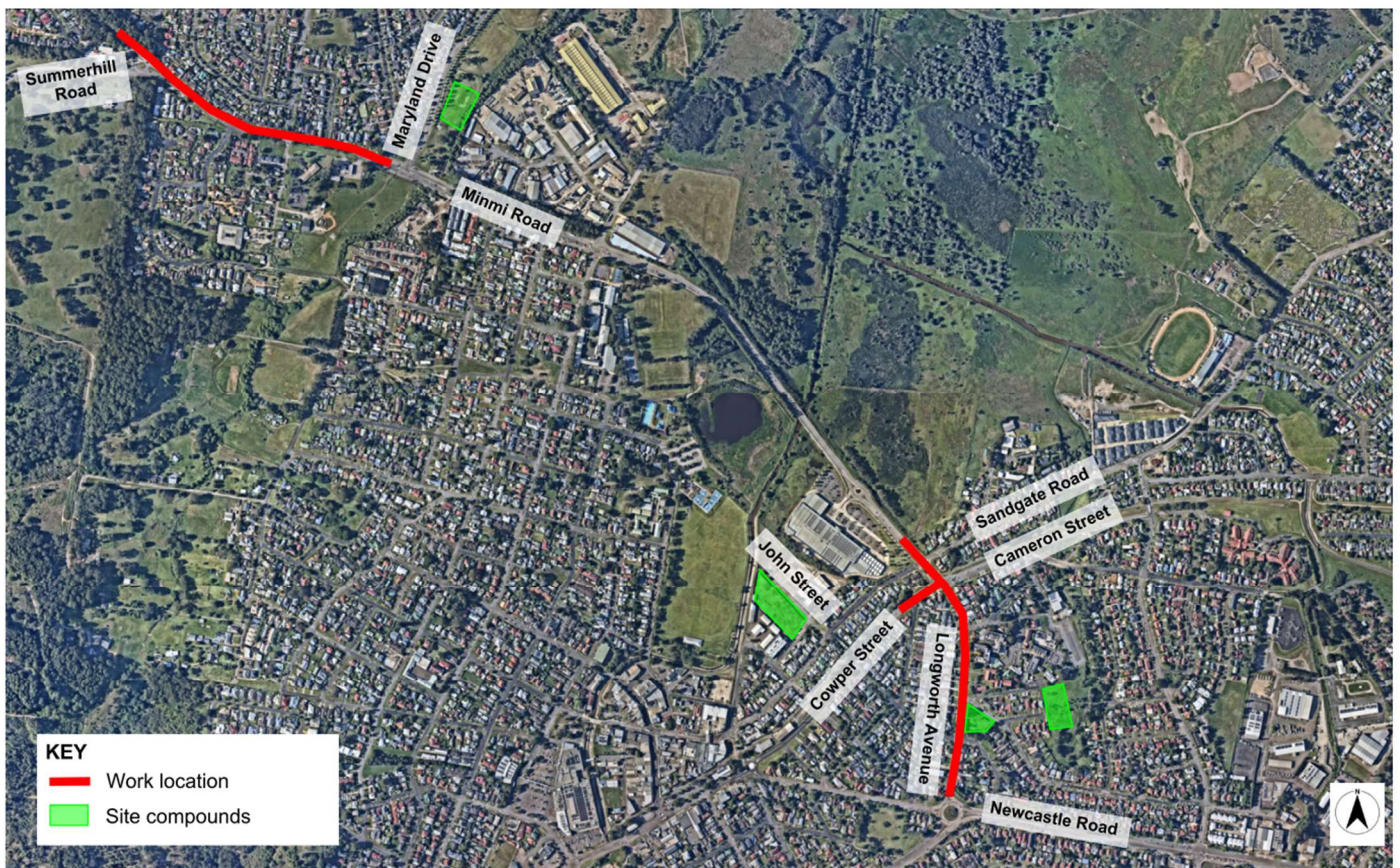
There will be some temporary traffic changes to ensure the work zone is safe. Lane closures and traffic control will be in place during the work and may affect travel times. There may be short term intermittent stops and a temporary 40 km/h reduced speed limit outside of peak times through the work zones for the safety of motorists and workers. Please keep to speed limits and follow the direction of traffic controllers and signs.

There will be upcoming changes to the traffic arrangement for northbound vehicles on Longworth Avenue between Newcastle Road and Cowper Street. A separate notification will be distributed to advise of these changes.

Contacts



If you would like further information about the project, please refer to Council's website: newcastle.nsw.gov.au or contact the project team on 1800 953 700, or email WCRU@daracon.com.au



Map showing location of work and the site compounds.