

# VENUE INFORMATION 2025/26



FOR MORE DETAILS    02 4974 1460    //   [cityhall@ncc.nsw.gov.au](mailto:cityhall@ncc.nsw.gov.au)    //   [newcastle.nsw.gov.au/city-hall](http://newcastle.nsw.gov.au/city-hall)

  
Newcastle  
City Hall





- 3 ABOUT THE VENUE
- 4 ROOM OPTIONS
- 11 VENUE HIRE FEES
- 12 PARKING & ACCESSIBILITY
- 13 CONDITIONS



## ABOUT THE VENUE

## THANK YOU FOR CONSIDERING NEWCASTLE CITY HALL FOR YOUR EVENT

Opened in 1929, this stunning venue is one of Newcastle's most prestigious and unique venues. With its grand architecture, sandstone pillars and marble staircases, Newcastle City Hall makes an impression.

With seven accessible function rooms, Newcastle City Hall has played host to a vast array of functions, including civic receptions, community gatherings, weddings, national and international conferences, trade shows and expos, corporate meetings, product launches and social events.

Your event will be in safe and experienced hands with the Newcastle City Hall team. We will work closely with you to ensure your event runs efficiently and has the desired impact. Our high-quality service standards, professionalism and impeccable attention to detail will ensure you and your guests have the ultimate event experience from beginning to end.

At City Hall, we highlight the finest local and seasonal ingredients in our menus. We support local suppliers from within the Hunter Joint Organisation and our focus is on wholesome, feel-good food made fresh with artisan products and minimal processing. With a steadfast dedication to creating everything in-house, we deliver memorable, restaurant-quality dishes that are not only nutritionally balanced but also bursting with local flavour.



### KEY

- |            |         |                    |
|------------|---------|--------------------|
| LIGHT RAIL | BUS     | ACCESSIBLE PARKING |
| TAXI       | PARKING |                    |



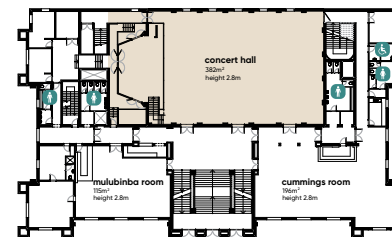
## ROOM OPTIONS



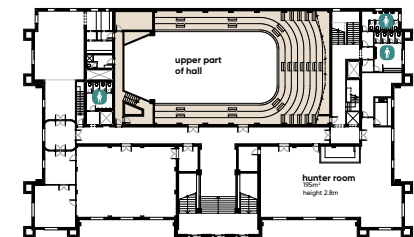
# concert hall

The Concert Hall has been acclaimed as one of the finest auditoriums in Australia. It features excellent natural acoustics, air conditioning, superior lighting and comfortable lower and upper gallery seating. The Concert Hall is regularly used for concerts, conferences, balls, gala dinners and exhibitions.

FIRST FLOOR



UPPER FLOOR



AREA  
**382M<sup>2</sup>**



THEATRE  
**805**



BANQUET  
**290**



CABARET  
**200**



COCKTAIL  
**500**



BOARDROOM  
**N/A**



U-SHAPE  
**N/A**



CLASSROOM  
**138**



CEILING HEIGHT  
**2.8-14M**

The capacities listed don't take into account the space required for dancefloors, catering stations, additional staging or AV.

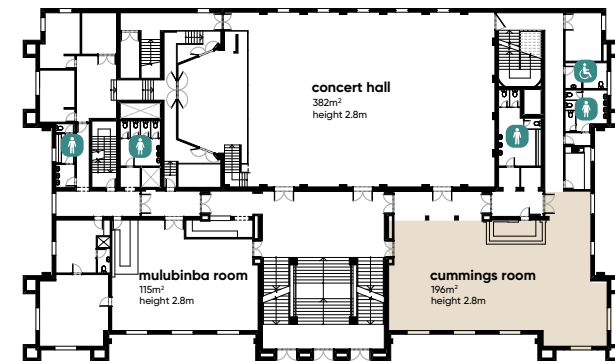
## ROOM OPTIONS



## cummings room

The Cummings Room is booked in conjunction with the Concert Hall and is situated directly adjacent to the Concert Hall, with views over the picturesque Civic Park. It has private bar facilities and is ideal for corporate functions, dinners and cocktail parties. The Cummings Room is commonly used as the foyer for the Concert Hall and makes an ideal morning and afternoon tea break area.

### FIRST FLOOR



AREA  
**193M<sup>2</sup>**



THEATRE  
**130**



BANQUET  
**100**



CABARET  
**72**



COCKTAIL  
**150**



BOARDROOM  
**30**



U-SHAPE  
**32**



CLASSROOM  
**54**



CEILING HEIGHT  
**2.8M**

The capacities listed don't take into account the space required for catering stations, staging or AV.



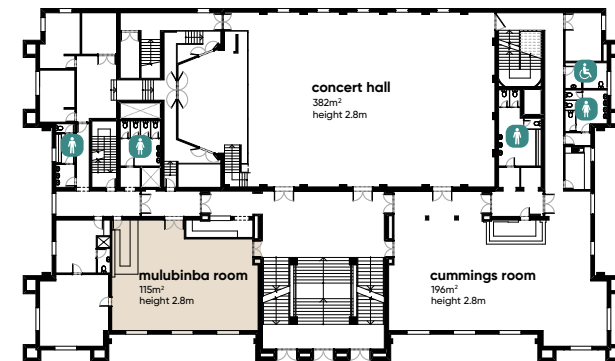
## ROOM OPTIONS



# mulubinba room

Located on the first floor, the Mulubinba Room boasts an authentic Art Deco atmosphere. This fully carpeted room features an abundance of natural light with views across Civic Park and is ideal for meetings, training sessions or as a breakout in conjunction with our larger rooms.

## FIRST FLOOR



AREA  
**114M<sup>2</sup>**



THEATRE  
**80**



BANQUET  
**60**



CABARET  
**48**



COCKTAIL  
**80**



BOARDROOM  
**28**



U-SHAPE  
**26**



CLASSROOM  
**36**



CEILING HEIGHT  
**2.8M**

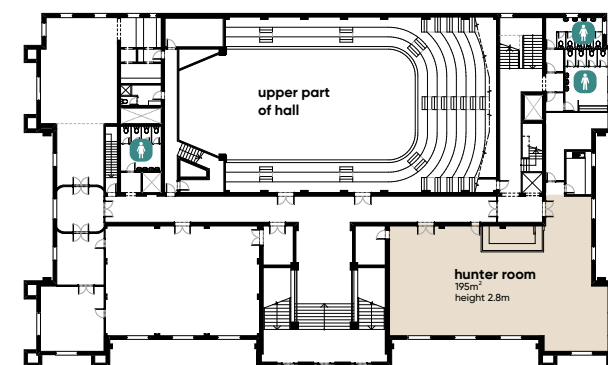
The capacities listed don't take into account the space required for catering stations, staging or AV.



# hunter room

Located on the second floor of Newcastle City Hall, the Hunter Room's elegant high-arched windows frame picture perfect views over Civic Park. It has private bar facilities, amenities, a dance floor, and balcony. With an abundance of natural light, it is ideal for meetings, training sessions, cocktail parties and gala dinners.

## UPPER FLOOR



AREA  
200M<sup>2</sup>



THEATRE  
150



BANQUET  
110



CABARET  
72



COCKTAIL  
150



BOARDROOM  
30



U-SHAPE  
32



CLASSROOM  
63



CEILING HEIGHT  
2.8M

The capacities listed don't take into account the space required for catering stations, staging or AV.

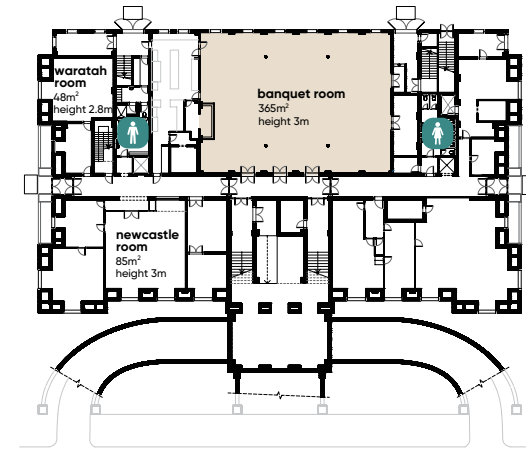
## ROOM OPTIONS



# banquet room

Located on the ground floor, with polished floors, high ceilings and natural light, the Banquet Room provides you with an opportunity to design a room that reflects your individual tastes and style. With private bar facilities this room is ideal for corporate dinners, trade displays, catering breaks and meetings.

## GROUND FLOOR



AREA  
**365M<sup>2</sup>**



THEATRE  
**300**



BANQUET  
**220**



CABARET  
**144**



COCKTAIL  
**300**



BOARDROOM  
**N/A**



U-SHAPE  
**40**



CLASSROOM  
**99**



CEILING HEIGHT  
**3M**

The capacities listed don't take into account the space required for catering stations, staging or AV.



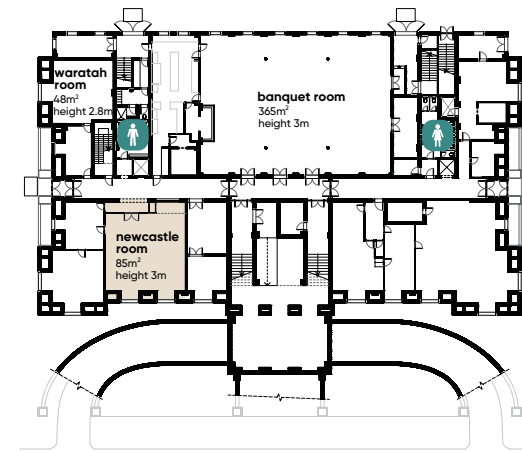
## ROOM OPTIONS



# newcastle room

Located on the ground floor, the versatile Newcastle Room is a perfect space for intimate meetings, workshops or presentations. The Newcastle Room is an ideal breakout space to the nearby Banquet Room.

## GROUND FLOOR



AREA  
**85M<sup>2</sup>**



THEATRE  
**60**



BANQUET  
**50**



CABARET  
**40**



COCKTAIL  
**60**



BOARDROOM  
**28**



U-SHAPE  
**20**



CLASSROOM  
**27**



CEILING HEIGHT  
**3M**

The capacities listed don't take into account the space required for catering stations, staging or AV.



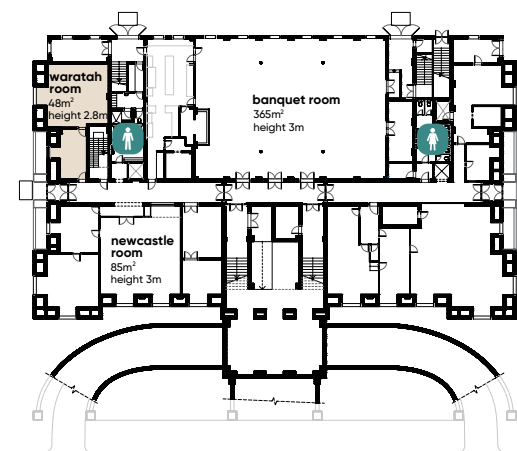
## ROOM OPTIONS



# waratah room

The Waratah Room boasts a separate vestibule making it ideal for interviews, tribunals, registrations or as a private area for morning/afternoon tea and lunch breaks.

## GROUND FLOOR



AREA  
**48M<sup>2</sup>**



THEATRE  
**30**



BANQUET  
**20**



CABARET  
**16**



COCKTAIL  
**30**



BOARDROOM  
**16**



U-SHAPE  
**18**



CLASSROOM  
**12**



CEILING HEIGHT  
**2.8M**



## VENUE HIRE FEES

### commercial

	MONDAY - FRIDAY		SATURDAY		SUNDAY/ PUBLIC HOLIDAY	
	HALF DAY < 4hrs	FULL DAY 4-8hrs	HALF DAY < 4hrs	FULL DAY 4-8hrs	HALF DAY < 4hrs	FULL DAY 4-8hrs
	\$	\$	\$	\$	\$	\$
Banquet Room	598	1,004	1,022	1,585	1,327	2,025
Concert Hall & Cummings Room	1,242	2,007	2,125	3,269	2,628	3,971
Hunter Room	598	1,004	1,022	1,585	1,327	2,025
Mulubinba Room	493	815	906	1,385	1,140	1,713
Newcastle Room or Waratah Room	407	656	824	1,236	1,053	1,699

### not-for-profit

	MONDAY - FRIDAY		SATURDAY		SUNDAY/ PUBLIC HOLIDAY	
	HALF DAY < 4hrs	FULL DAY 4-8hrs	HALF DAY < 4hrs	FULL DAY 4-8hrs	HALF DAY < 4hrs	FULL DAY 4-8hrs
	\$	\$	\$	\$	\$	\$
Banquet Room	424	702	715	1,109	930	1,413
Concert Hall & Cummings Room	871	1,428	1,491	2,287	1,839	2,780
Hunter Room	424	702	715	1,109	930	1,413
Mulubinba Room	348	571	636	969	800	1,223
Newcastle Room or Waratah Room	284	465	580	865	775	1,194

**HALF DAY HIRE:** Up to 4 event hours plus 1 hour of bump in.

**FULL DAY HIRE:** More than 4 hours, less than 8 event hours, plus 1 hour of bump in.

**ADDITIONAL HOURS:** Are charged pro-rata.

**HIRE INCLUDES:** Tables, chairs, linen, cutlery, crockery, glassware, data projector, screen, flipchart, WiFi, whiteboard, lectern and wired microphone.

**NOT FOR PROFIT (NFP):** rate applies to registered incorporated not-for-profit/charities, presenting events with community benefit, educational or cultural purpose where the organisation is based in the LGA or can clearly demonstrate a reinvestment back into the LGA community. Does not apply to any other organisation or commercial purpose.

All fees are inclusive of GST.



### PARKING

Located at 290 King Street, Newcastle, City Hall can be found opposite Civic Park, next to Civic Theatre Newcastle and the University of Newcastle's city campus and adjoining Wheeler Place.

There is a range of on-street and off-street near City Hall.

#### ON-STREET

On-street parking can be paid for at the parking meter or using the [EasyPark app](#).

#### OFF-STREET

The closest parking station to Newcastle City Hall is [Hunter Parking & Storage](#), which is approximately 400m from Newcastle City Hall.

For other options, please refer to the [off-street parking map](#).

### PUBLIC TRANSPORT

Trains, buses, light rail and a ferry service can help you get to City Hall. An Opal Card, or a credit/debit card, allows easy access to all public transport ticketing throughout the City. Use [trip planner](#) or an app such as [Opal Travel](#) to plan your trip.

### ACCESSIBILITY

Accessible entry to Newcastle City Hall is from the side entrances at Christie Street (off King Street, Newcastle) or Wheeler Place.

The elevator to Level 1 & 2 is located at the Wheeler Place end of the building.

#### ACCESSIBLE PARKING

Accessible Parking spaces can be found at the following locations:

- Cnr King Street and Burwood Street (near the Kingsley)
  - 5 spaces
- Auckland Street (between Hunter Street and King Street)
  - 2 Spaces
- Hunter Street (Near Wheeler Place and the Civic Theatre Newcastle) - 1 space

Spaces are also provided in the carpark behind the Newcastle Regional Library accessed via Queen Street.





## CONDITIONS

Pricing is valid for the 2025/26 financial year. Room allocations will be determined by the Newcastle City Hall team based on your guest numbers.

Please note no external catering is permitted at Newcastle City Hall.





Newcastle  
City Hall

FOR MORE DETAILS

p. 02 4974 1460

e. [cityhall@ncc.nsw.gov.au](mailto:cityhall@ncc.nsw.gov.au)

w. [newcastle.nsw.gov.au/city-hall](http://newcastle.nsw.gov.au/city-hall)

290 King Street  
Newcastle NSW 2300