

BUSINESS PACKAGE 2025/26

WORKING *Together*



FOR MORE DETAILS 02 4974 1460 // cityhall@ncc.nsw.gov.au // newcastle.nsw.gov.au/city-hall





3	ABOUT THE VENUE
4	ROOM OPTIONS
10	IN-HOUSE CATERING
12	DAY DELEGATE PACKAGE
14	MORNING TEA
15	WORKING LUNCH MENU
16	AFTERNOON TEA
17	CONDITIONS

ABOUT THE VENUE

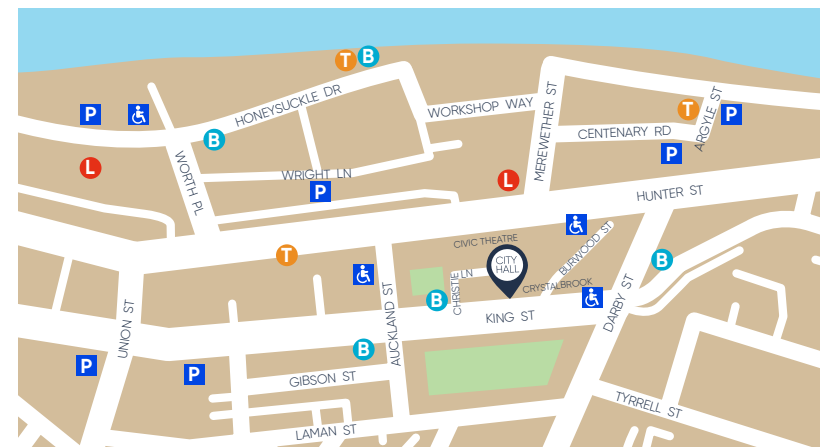
THANK YOU FOR CONSIDERING NEWCASTLE CITY HALL FOR YOUR EVENT

Opened in 1929, this stunning venue is one of Newcastle's most prestigious and unique venues. With its grand architecture, sandstone pillars and marble staircases, Newcastle City Hall definitely makes an impression.

With seven accessible function rooms, Newcastle City Hall has played host to a vast array of functions, including civic receptions, community gatherings, weddings, national and international conferences, trade shows and expos, corporate meetings, product launches and social events.

Only 20 minutes from Newcastle Airport with direct flights to most capital cities and near a range of public transport options, Newcastle City Hall has over 2000 accommodation rooms within a leisurely 10 minute stroll. It is also adjacent to the majestic Civic Theatre, offering an additional 1500 seat venue as well as Wheeler Place, a versatile 1200m² open air space, offering a blank canvas for your next event.

Your event will be in safe and experienced hands with the Newcastle City Hall team. Our high-quality service standards, professionalism and impeccable attention to detail will ensure you and your guests have the ultimate event experience from beginning to end.



KEY

- | | |
|------------|--------------------|
| BUS | ACCESSIBLE PARKING |
| LIGHT RAIL | TAXI |
| | PARKING |

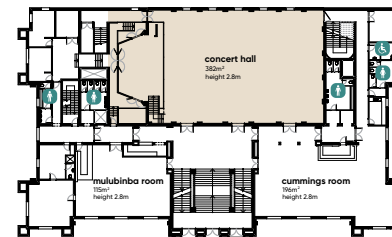
ROOM OPTIONS



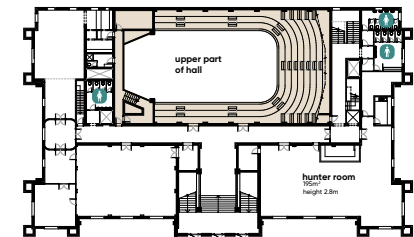
concert hall

The Concert Hall has been acclaimed as one of the finest auditoriums in Australia. It features excellent natural acoustics, air conditioning, superior lighting and comfortable lower and upper gallery seating. The Concert Hall is regularly used for concerts, conferences, balls, gala dinners and exhibitions.

FIRST FLOOR



UPPER FLOOR



AREA
382M²



THEATRE
805



BANQUET
290



CABARET
200



COCKTAIL
500



BOARDROOM
N/A



U-SHAPE
N/A



CLASSROOM
138



CEILING HEIGHT
2.8-14M

The capacities listed don't take into account the space required for dancefloors, catering stations, additional staging or AV desks.

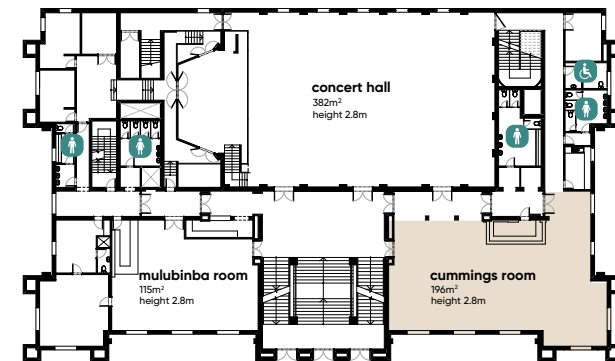
ROOM OPTIONS



cummings room

The Cummings Room is booked in conjunction with the Concert Hall and is situated directly adjacent to the Concert Hall, with views over the picturesque Civic Park. It has private bar facilities and is ideal for corporate functions, dinners and cocktail parties. The Cummings Room is commonly used as the foyer for the Concert Hall and makes an ideal morning and afternoon tea break area.

FIRST FLOOR



AREA
193M²



THEATRE
130



BANQUET
100



CABARET
72



COCKTAIL
150



BOARDROOM
30



U-SHAPE
32



CLASSROOM
54



CEILING HEIGHT
2.8M

The capacities listed don't take into account the space required for catering stations, staging or AV desks.

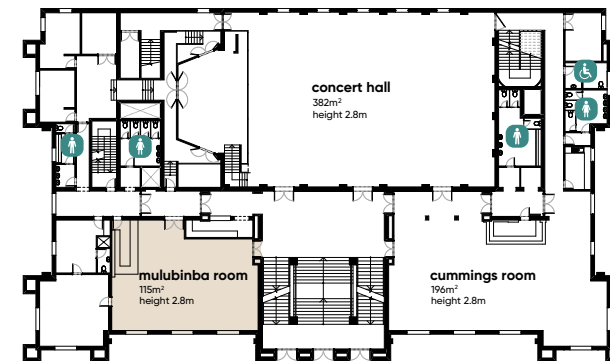
ROOM OPTIONS



mulubinba room

Located on the first floor, the Mulubinba Room boasts an authentic Art Deco atmosphere. This fully carpeted room features an abundance of natural light with views across Civic Park and is ideal for meetings, training sessions or as a breakout in conjunction with our larger rooms.

FIRST FLOOR



AREA
114M²



THEATRE
80



BANQUET
60



CABARET
48



COCKTAIL
80



BOARDROOM
28



U-SHAPE
26



CLASSROOM
36



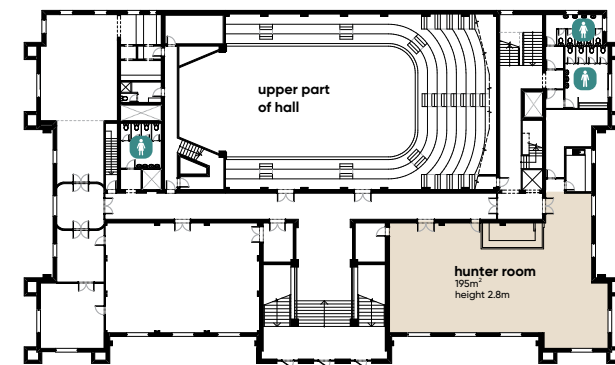
CEILING HEIGHT
2.8M

The capacities listed don't take into account the space required for catering stations, staging or AV desks.

hunter room

Located on the second floor of Newcastle City Hall, the Hunter Room's elegant high-arched windows frame picture perfect views over Civic Park. It has private bar facilities, amenities, a dance floor, and balcony. With an abundance of natural light, it is ideal for meetings, training sessions, cocktail parties and gala dinners.

UPPER FLOOR



AREA
200M²



THEATRE
150



BANQUET
110



CABARET
72



COCKTAIL
150



BOARDROOM
30



U-SHAPE
32



CLASSROOM
63



CEILING HEIGHT
2.8M

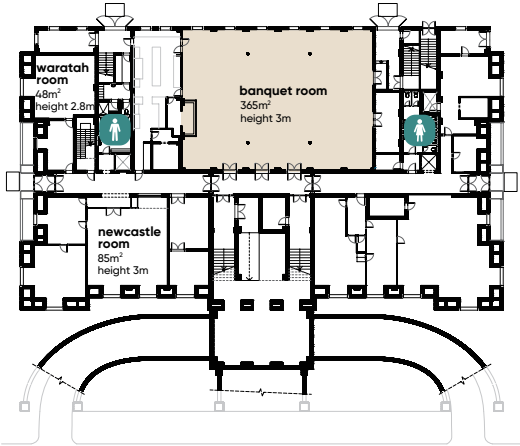
The capacities listed don't take into account the space required for catering stations, staging or AV desks.



banquet room

Located on the ground floor, with polished floors, high ceilings and natural light, the Banquet Room provides you with an opportunity to design a room that reflects your individual tastes and style. With private bar facilities this room is ideal for corporate dinners, trade displays, catering breaks and meetings.

GROUND FLOOR



AREA 365M ²	THEATRE 300	BANQUET 220	CABARET 144
COCKTAIL 300	BOARDROOM N/A	U-SHAPE 40	CLASSROOM 99

CEILING HEIGHT
3M

The capacities listed don't take into account the space required for catering stations, staging or AV desks.

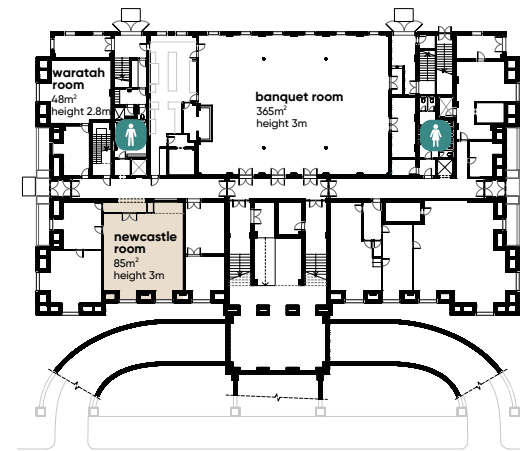
ROOM OPTIONS



newcastle room

Located on the ground floor, the versatile Newcastle Room is a perfect space for intimate meetings, workshops or presentations. The Newcastle Room is an ideal breakout space to the nearby Banquet Room.

GROUND FLOOR



AREA
85M²



THEATRE
60



BANQUET
50



CABARET
40



COCKTAIL
60



BOARDROOM
28



U-SHAPE
20



CLASSROOM
27



CEILING HEIGHT
3M

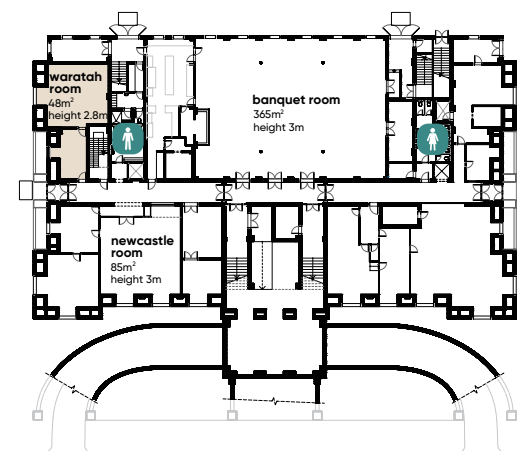
The capacities listed don't take into account the space required for catering stations, staging or AV desks.



waratah room

The Waratah Room boasts a separate vestibule making it ideal for interviews, tribunals, registrations or as a private area for morning/afternoon tea and lunch breaks.

GROUND FLOOR



AREA
48M²



THEATRE
30



BANQUET
20



CABARET
16



COCKTAIL
30



BOARDROOM
16



U-SHAPE
18



CLASSROOM
12



CEILING HEIGHT
2.8M



IN-HOUSE CATERING

local flavour to savour

Our dedicated hospitality team is here to provide you with outstanding dining and top-tier service in one of our city's iconic and historic venues.

Your event will be in safe and experienced hands with the Newcastle City Hall team. We will work closely with you to ensure your event runs efficiently and has the desired impact to ensure business objectives are met. Our high-quality service standards, professionalism and impeccable attention to detail will ensure you and your guests have the ultimate event experience from beginning to end.

At City Hall, we highlight the finest local and seasonal ingredients in our menus. We support local suppliers from within the Hunter Joint Organisation and our focus is on wholesome, feel-good food made fresh with artisan products and minimal processing. With a steadfast dedication to creating everything in-house, we deliver memorable, restaurant-quality dishes that are not only nutritionally balanced but also bursting with local flavour.

full day delegate package

MINIMUM OF 40 GUESTS

INCLUSIONS

Plenary room hire from 9.00am to 5.00pm

Freshly brewed local coffee, specialty teas, & house-made iced tea on arrival

MORNING TEA BREAK

Freshly brewed local coffee, specialty teas & house-made iced tea are served with the daily morning tea item & a selection of seasonal sliced fruits, yoghurt, & honey

LUNCH*

Select one from the following lunch options:

- Build your own sandwich & salad lunch buffet plus daily salads
- Artisan breads, wraps & salad buffet plus daily salads
- Daily hot working lunch plus daily salads

Accompanied by freshly brewed local coffee, specialty teas, house-made iced tea, soft drinks & assorted East Coast juices

* Exhibition menu available for conferences with over 100 guests and trade display.

AFTERNOON TEA BREAK

Freshly brewed local coffee, specialty teas & house-made iced tea are served with the daily afternoon tea item & a selection of vegetable crudites & house-made dips

Notepads, pens, mints, still & sparkling water

Audio visual: WIFI, data projector, screen, whiteboard, flip chart, wired microphone and lectern

MON-FRI

Commercial*

\$78_{PP}

NFP*

\$73_{PP}

*Per person per day.

DAY DELEGATE PACKAGES



half day delegate package

MINIMUM OF 40 GUESTS

INCLUSIONS

Plenary room hire from 8.00am to 12:00pm or 1:00pm to 5.00pm

Freshly brewed local coffee, specialty teas & house-made iced tea on arrival

MORNING/AFTERNOON TEA BREAK

Freshly brewed local coffee, specialty teas & house-made iced teas served with two break items

LUNCH*

Select one from the following lunch options:

- Build your own sandwich & salad lunch buffet plus daily salads
- Artisan breads, wraps & salad buffet plus daily salads
- Daily hot working lunch plus daily salads

Accompanied by freshly brewed local coffee, specialty teas, house-made iced tea, soft drinks & assorted East Coast juices

* Exhibition menu available for conferences with over 100 guests and trade display.

Notepads, pens, mints, still & sparkling water

Audio Visual: WIFI, data projector, screen, whiteboard, flip chart, wired microphone & lectern

MON-FRI

Commercial*

\$ **62** PP

NFP*

\$ **58** PP

*Per person per day.

DAY DELEGATE PACKAGES



morning tea options

MONDAY	Double smoked ham & Swiss cheese petit croissants
TUESDAY	Bakers batch scones with jam & Chantilly cream V
WEDNESDAY	Bacon & egg cups with tomato chutney GF DF
THURSDAY	Chef's selection of assorted petit glazed Danishes V
FRIDAY	Fresh baked Portuguese tart GF V

Morning tea items served with a selection of seasonal sliced fruits, yoghurt & honey **V**

Gluten Free **GF** Vegan **VGN** Vegetarian **V** Dairy Free **DF**

Gluten Free Option **GFO** Dairy Free Option **DFO** Nut Free Option **NFO**



working lunch menu

MINIMUM OF 40 GUESTS

BUILD YOUR OWN SANDWICH & SALAD BUFFET

- Build your own lunch buffet with a spread of fresh salad fillings, cold cut meat options, artisan breads & wraps, matching condiments, relishes & chutneys
- Daily salad options

Recommended for events with guests that have dietary requirements.

ARTISAN BREADS, WRAPS & SALAD BUFFET

- Sandwiches, rolls & wraps filled with our chef's selection of healthy & hearty fillings
- Daily salad options

DAILY HOT WORKING LUNCH

MONDAY	Beef Stroganoff with whipped parsley potato GF DF
TUESDAY	Chicken meatball sugo on a bed of gnocchi
WEDNESDAY	Navarin of lamb with sweet potato mash GF DF
THURSDAY	Mongolian chicken with brown rice GF DF
FRIDAY	Sri Lankan spiced pork curry with cauliflower puree GF DF

DAILY SALAD OPTIONS

EVERY DAY	Garden toss salad with cherry tomatoes, cucumbers, Spanish onion, carrots, mesculin & a Dijon balsamic dressing GF DF V
MONDAY	Moroccan vegetable pearl cous cous with currants & oranges DF VGN
TUESDAY	Wombok toss salad with crispy onions, miso roasted eggplant & coriander GF DF VGN
WEDNESDAY	Lemon dressed kale crunch salad with sweet potato, quinoa & a tahini dressing GF DF VGN
THURSDAY	Rustic potato salad with capers and a creamy Dijon dressing GF DF VGN
FRIDAY	Rice noodle zing: vermicelli rice noodles, capsicum, cucumber, spanish onion, shallots, mint, coriander & a lime soy dressing GF DF VGN

Gluten Free **GF** Vegan **VGN** Vegetarian **V** Dairy Free **DF**

Gluten Free Option **GFO** Dairy Free Option **DFO** Nut Free Option **NFO**

afternoon tea options

MONDAY	House-baked assorted muffins V
TUESDAY	Petit chicken & tarragon sausage rolls GF
WEDNESDAY	Assorted house-baked friands GF V
THURSDAY	Zucchini & semi-dried tomato with saltbush savoury muffins V
FRIDAY	Pumpkin & feta with native oregano pasties GF V

Afternoon tea items served with a selection of vegetable crudités and house-made dips **GF V**

Gluten Free **GF** Vegan **VGN** Vegetarian **V** Dairy Free **DF**

Gluten Free Option **GFO** Dairy Free Option **DFO** Nut Free Option **NFO**





CONDITIONS

Pricing is valid for events held Monday to Friday in the 2025/26 financial year.

Food and beverage offerings are subject to change according to season and availability.

Minimum of 40 guests. Room allocations will be determined by the Newcastle City Hall team based on your guest numbers.

Please note external catering is not permitted at Newcastle City Hall.





Newcastle
City Hall

FOR MORE DETAILS

p. 02 4974 1460

e. cityhall@ncc.nsw.gov.au

w. newcastle.nsw.gov.au/city-hall

290 King Street
Newcastle NSW 2300