

SCHOOL FORMAL PACKAGE

# year 12



2024

FOR MORE DETAILS 02 4974 1462 // [fortscratchleyfunctions@ncc.nsw.gov.au](mailto:fortscratchleyfunctions@ncc.nsw.gov.au) // [newcastle.nsw.gov.au/fort-scratchley](http://newcastle.nsw.gov.au/fort-scratchley)

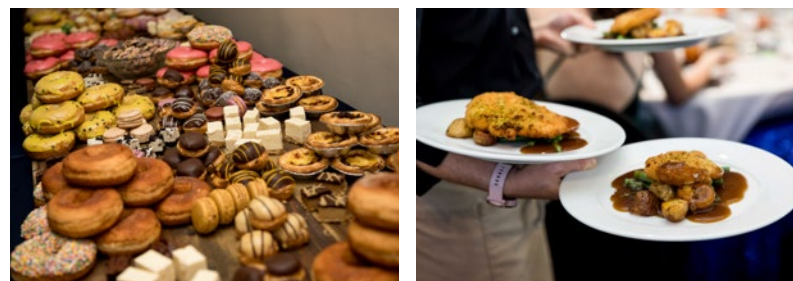


Fort  
Scratchley

YOUR ALL INCLUSIVE VENUE

# year 12 formal package

FORT SCRATCHLEY FUNCTION CENTRE



---

CHOICE OF DAYS

MONDAY, TUESDAY, WEDNESDAY OR THURSDAY EVENING

---

EVENT DURATION

4 HOURS (6PM - 10PM)

## DELICIOUS DRINKS AND FOOD

Mocktail on arrival

Bottomless soft drinks

Freshly baked bread rolls and butter medallions

Alternate Service *(choose two menu items)*

Char-grilled sirloin with potato gratin, seasonal greens & red wine jus **GF**

Chicken breast with roasted pumpkin and thyme, field mushroom & honey mustard cream sauce **GF**

Grilled barramundi fillet with pomme puree, sauteed spinach & lemon butter **GF**

Panko crumbed chicken schnitzel with herb roasted chat potatoes, seasonal greens & roast chicken jus

Low and slow cooked beef brisket with a mac and cheese cake, southern slaw & smoked BBQ sauce **GFO**

Crisp pork belly with sweet potato puree, steamed greens & teriyaki sauce **GF DF**

Finish with a simply mouth-watering dessert grazing station with a variety of petit cakes and slices, fresh cut fruits, chocolates, and confectionery

## THE VIBE AND GOOD TIMES SUPPLIED

'2024' light up numbers

Table centrepieces

Four hours DJ Entertainment

Lectern and microphone, easel and frame

Linen tablecloths and paper napkins

Tables, chairs, cutlery, crockery and glassware

Fitted black chair covers

\*Minimum numbers apply

\$93  
PP



let's  
party



# a little extra

## ENHANCE YOUR CELEBRATION

\$

Chef's selection of two canapes on arrival

11<sup>PP</sup>

Add donuts to your dessert grazing station

6<sup>PP</sup>

Plated dessert upgrade

12<sup>PP</sup>

Alternate Service (*choose two menu items*)

New York baked cheesecake with  
strawberry mint reduction & double cream

Ginger sticky date pudding with salted butterscotch  
sauce & double cream **GF**

Pavlova with passionfruit curd, seasonal berries  
& crème fraiche **GF DFO**

Chocolate torte with raspberry coulis & double cream **GF**

Add some sparkle with a ceiling of fairy lights

550



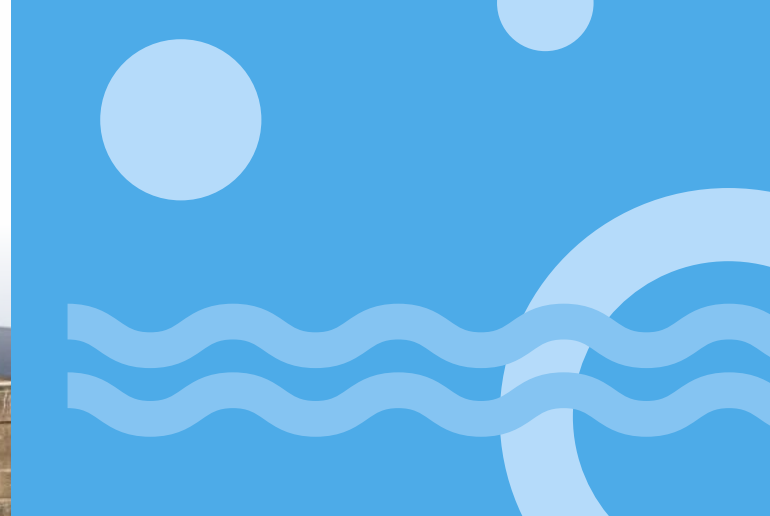
## TESTIMONIALS



The venue was amazing and looked professional. The staff were extremely accommodating to the unfortunate weather situation which allowed the event to run smoothly.

The dessert buffet was a highlight of the food experience and the mocktail on arrival was a fun aspect for the students. The students, staff and principal was extremely impressed with the venue and organisation of the event.

*Glendale Technology High School  
Year 12 Formal*



## YEAR 12 FORMAL CONDITIONS OF HIRE:

\$930.00 (equivalent to 10 guests x \$93.00) deposit due within 14 days of booking with the balance due 14 days prior to your formal

Final numbers and dietary requirements are due 14 days prior to your event

Venue hire is for 4 hours and must finish at 10.00pm. This includes access for the event from 4pm on the day of the formal

For year 12 formals we require one responsible adult/teacher per 30 guests to be present at the formal for its duration

Maximum of 10 guests per table

Non-alcoholic event

Security will be present for the duration of the formal

Set table seating mandatory to assist with dietary requirements



let's  
celebrate



FOR MORE DETAILS 02 4974 1462 // [fortscratchleyfunctions@ncc.nsw.gov.au](mailto:fortscratchleyfunctions@ncc.nsw.gov.au) // [newcastle.nsw.gov.au/fort-scratchley](http://newcastle.nsw.gov.au/fort-scratchley)



Newcastle  
City Hall