

# 2025/26 Grants & Sponsorship Programs Round Opening



City of  
Newcastle

# Acknowledgment of Country

**We all sit on Awabakal and Worimi land**

**‘Niirun Yalawa Awabakal and Worimi burrei’**

City of Newcastle (CN) acknowledges its Local Government Area (LGA) sits within the Country of the Awabakal and Worimi peoples. We acknowledge that Country for Aboriginal peoples is an interconnected set of ancient relationships. We acknowledge the custodianship of the Awabakal and Worimi peoples and the care and stewardship they have performed in this place since time immemorial.

**Always was, always will be Aboriginal land**

**‘Wunyibu wunyibu warra wunyibu wunyibu gkuuba Aboriginal burrei’**



# Agenda

1. Application Dates & How to Apply
2. Governance
3. Overview of Programs
4. Application Assessment Process
5. Resources & Helpful Tips
6. Questions

# **Application Dates & How To Apply**

**\$840,000 available** in 2025/26 Grants & Sponsorship Program  
(across 10 streams)

**Applications Open**  
Monday, 2 June 2025 (9am)

**Applications Close**  
Sunday, 29 June 2025 (midnight)

**Activity Start Date**  
22 September 2025 (onwards)

**Activity End Date**  
30 June 2026

Application forms will be available online (**SmartyGrants**) when programs open via links on City of Newcastle's Grants and Sponsorship webpages:

<https://newcastle.nsw.gov.au/community/grants-and-sponsorships>

Name	Details	Open or closed
<a href="#">Arts, Culture and History</a>	Support Activities that promote and celebrate our rich heritage, creative and diverse community and contribute to the achievement of the city's desired outcomes for culture, heritage, and the arts.  In addition, CN supports Professional Not-For-Profit Arts and Cultural Organisations by providing funding to support business sustainability and program delivery.	Open 2 - 29 June 2025
<a href="#">Environment</a>	Supports activities that improve Newcastle's environment by expanding our urban forest through revegetation initiatives, greening streets, parks and open space and providing increased pollinator habitat throughout the city and/or the improvement of existing Community Garden infrastructure.	Open 2 - 29 June 2025
<a href="#">Social Inclusion</a>	Free/low-cost children youth and families activities; friendship and mentor groups; skills development workshops, outreach programs, community concern collaborations; fitness craft, nature, mindfulness etc themed.	Open 2 - 29 June 2025
<a href="#">Sustainability</a>	Supports Activities that enhance the sustainability of Newcastle, through the reduction of greenhouse gas emissions, increasing resilience to the impacts of climate change and circular economy initiatives.	Open 2 - 29 June 2025

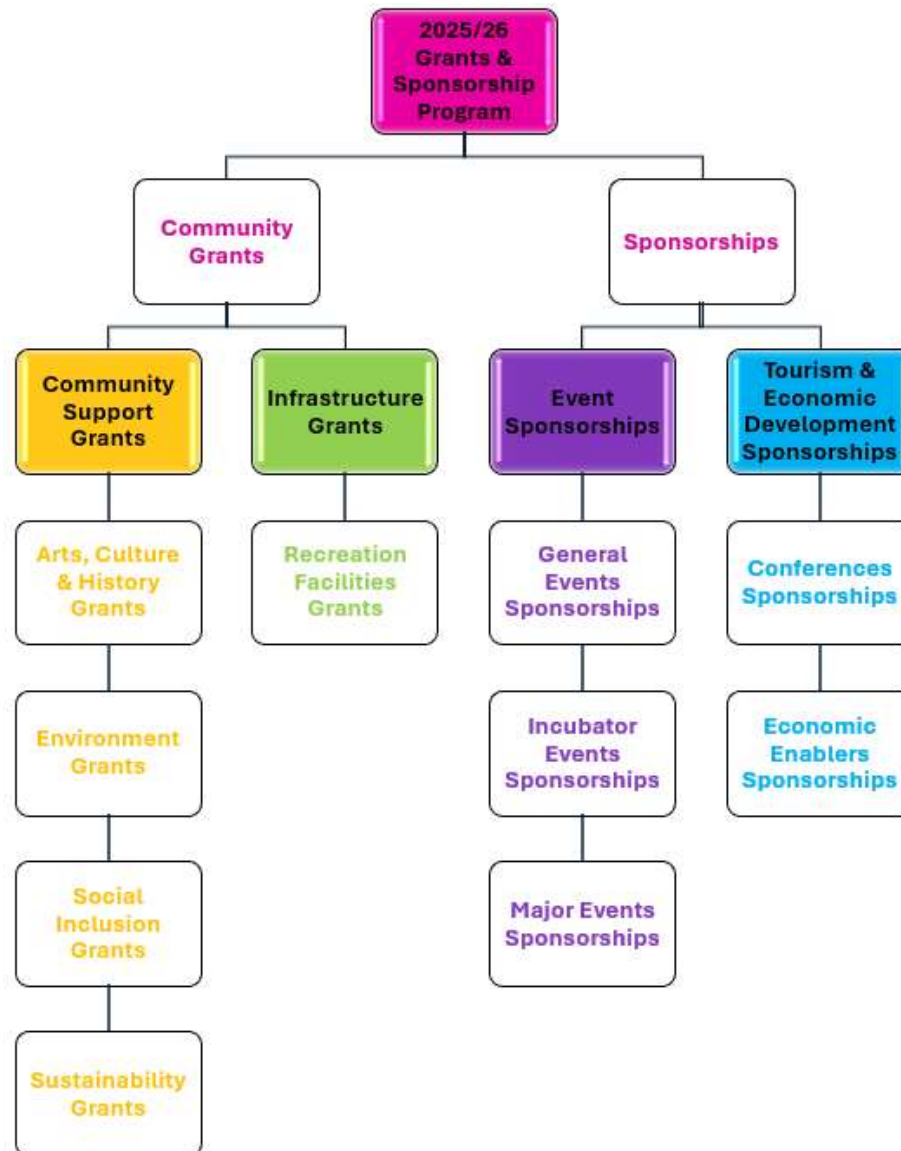
# Governance





In accordance with the Policy and Guidelines, an applicant must not have any outstanding debt payable to CN and must have successful finalised acquittals for any previous approved CN Grant or Sponsorship application.

# Overview of Programs & Streams



# Community Grants

## Community Support Grants

- **Arts, Culture & History** - Supports activities that promote and celebrate Newcastle's rich heritage, creative and diverse community.
- **Environment** - Supports activities that improve Newcastle's environment by expanding our urban forest through revegetation initiatives, greening streets, parks and open space and providing increased pollinator habitat throughout the city and/or the improvement of existing Community Garden infrastructure.
- **Social Inclusion** - Supports activities that strengthen our local communities by increasing social connection and inclusion within and between communities.
- **Sustainability** - Supports activities that enhance the sustainability of Newcastle, through the reduction of greenhouse gas emissions, increasing resilience to the impacts of climate change and circular economy initiatives.

## Infrastructure Grants

- **Recreation Facilities** - To assist in the provision or development of suitable sport and recreation facilities. To create opportunities for CN and local sporting groups to form Partnerships in upgrading existing or developing new facilities. To provide a wide range of sport and recreation facilities that assist in meeting the needs of the community in a cost effective and co-operative manner.



# Community Support Grants

Stream	Allocated Budget	Application Amounts	Eligible Entities	Examples of Activities
Arts, Culture & History	\$100,000	\$2,000 - \$20,000  (Up to \$50,000 for professional not-for-profit arts and cultural organisations))	<ul style="list-style-type: none"> <li>• Legally constituted not-for-profit organisations</li> <li>• Businesses</li> <li>• Individuals must be auspiced by eligible entity</li> <li>• Legally constituted professional not-for-profit arts and cultural organisations</li> </ul>	<ul style="list-style-type: none"> <li>• Professional skills development</li> <li>• Creation of new works and creative development, workshops, talks or public programs</li> <li>• Digital or video based projects</li> <li>• Community engagement activities</li> <li>• Heritage walking tours</li> </ul>
Environment	\$100,000	\$2,000 - \$20,000	<ul style="list-style-type: none"> <li>• Legally constituted not-for-profit organisations</li> <li>• Small businesses</li> <li>• Individuals must be auspiced by eligible entity</li> <li>• Voluntary run groups</li> <li>• Community garden groups</li> </ul>	<ul style="list-style-type: none"> <li>• Outreach programs such as bioblitz or citizen science activities</li> <li>• Installing pollinator habitats</li> <li>• Greening walls or revegetation</li> <li>• Supplementary wildlife habitat</li> <li>• Improvements to existing Community Garden infrastructure</li> </ul>
Social Inclusion	\$240,000	\$2,000 - \$20,000	<ul style="list-style-type: none"> <li>• Legally constituted not-for-profit organisations</li> <li>• Businesses</li> <li>• Individuals must be auspiced by eligible entity</li> <li>• Voluntary run groups</li> </ul>	<ul style="list-style-type: none"> <li>• Free/low cost children youth and family activities</li> <li>• Friendship and mentor groups</li> <li>• Skills development workshops</li> <li>• Outreach programs</li> <li>• Community concern collaborations</li> </ul>
Sustainability	\$50,000	\$1,000 - \$10,000	<ul style="list-style-type: none"> <li>• Legally constituted not-for-profit organisations</li> <li>• Small businesses</li> <li>• Individuals must be auspiced by eligible entity</li> <li>• Voluntary run groups</li> <li>• Community garden groups</li> </ul>	<ul style="list-style-type: none"> <li>• Projects supporting the uptake of electric vehicles</li> <li>• Solar batteries, energy efficiency measures or electrification</li> <li>• Educational workshops</li> <li>• Energy equity projects</li> </ul>

## Infrastructure Grants

Stream	Allocated Budget	Application Amounts	Eligible Entities	Examples of Activities
Recreation Facilities	\$70,000	\$1,000 - \$10,000*	<ul style="list-style-type: none"><li>• Legally constituted not-for-profit organisations</li><li>• Sporting clubs and associations</li></ul>	<ul style="list-style-type: none"><li>• Pathways</li><li>• Canteen renovations</li><li>• Fencing</li><li>• Park drainage or irrigation</li><li>• Cricket sign screens</li></ul>

*\*Minimum 50% applicant contribution*

# Sponsorships

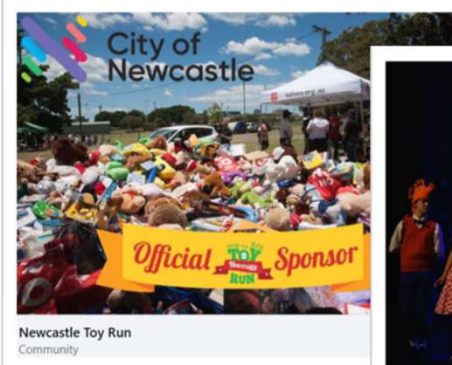


## Event Sponsorships

- **General** - Support for events with a community focus that contribute to creating vibrant spaces and places across the city.
- **Incubator** - Supports new and emerging events to increase event profile and encourage visitation and/ or participation.
- **Major** - Supports established events with a successful record of delivery and marketing to attract local and out of region day trippers, overnight visitation. Major events will also demonstrate collaboration with local businesses to create economic dispersal.

## Tourism and Economic Development Sponsorships

- **Conferences** - Supports multi-day business events with 150 delegates or more that are aligned to Newcastle's economic pillars (existing and emerging), that promote Newcastle as a premier conferencing destination.
- **Economic Enablers** - Assists economic development initiatives that enable local skill acquisition, support local business growth and/or encourage innovation and investment.



City of  
Newcastle

# Event Sponsorship

Stream	Allocated Budget	Application Amounts	Eligible Entities	Examples of Activities
General	\$200,000 (combined budget)	Up to \$10,000*	<ul style="list-style-type: none"> <li>Legally constituted not-for-profit organisations</li> <li>Businesses</li> </ul>	Events with local attendees with CN community recognition
Incubator		Up to \$20,000*	<ul style="list-style-type: none"> <li>Legally constituted not-for-profit organisations</li> <li>Businesses</li> </ul>	Event with local attendees with potential to attract attendees from surrounding LGAs
Major		Up to \$25,000*	<ul style="list-style-type: none"> <li>Legally constituted not-for-profit organisations</li> <li>Businesses</li> </ul>	Event that attracts local, interstate and national attendees

*\*Minimum 50% applicant contribution*

# Tourism & Economic Development Sponsorship

Stream	Allocated Budget	Application Amounts	Eligible Entities	Examples of Activities
Conferences	\$70,000 (combined budget)	Up to \$20,000*	<ul style="list-style-type: none"> <li>Legally constituted not-for-profit organisations</li> <li>Businesses</li> </ul>	Multi-day interstate/national conference
Economic Enablers		Up to \$20,000*	<ul style="list-style-type: none"> <li>Legally constituted not-for-profit organisations</li> <li>Businesses</li> </ul>	Sector specific training modules

*\*Minimum 50% applicant contribution*

# **What is the Application Assessment Process?**

- **Eligibility Check Form** – Grants & Sponsorship Officer
- **Pre-Panel Assessment Forms** – Subject Matter Experts
- **Panel Assessment** – Lord Mayor, Director, Executive Manager (as a minimum)

<b>Base Assessment Criteria</b>	Alignment to CN Priorities: the degree to which the Activity addresses CN's priorities from the Community Strategic Plan (CSP) and any additional priority areas identified annually. 20%
	Collaboration and engagement: the extent to which the proposed Activity demonstrates constructive and cooperative relationships between the applicant, CN, surrounding property owners and community. 20%
	Delivery: ability to demonstrate the delivery of Activity outcomes can occur on time and within budget. 20%
	Value with public money: the ability to demonstrate value for money through careful consideration of costs, benefits, options, and risk. Funding co-contributions from applicant and partner organisations are encouraged. 20%
<b>Additional Assessment Criteria</b>	Demonstration that the Activity will improve building facades and create active frontages in the city, sensitive to heritage, evoking pride, enhancing our city's presentation, and engaging the community in local and neighbourhood centres revitalisation. 20%



# Resources & Helpful Tips



## Grants webpage

<https://newcastle.nsw.gov.au/community/grants-and-sponsorships/grants>

## Sponsorships webpage

<https://newcastle.nsw.gov.au/community/grants-and-sponsorships/sponsorship>

### Grants & Sponsorship Eligibility Check Form

 Listen  Share

Check your eligibility to apply for our different Grants & Sponsorship programs using the form below.

- Please note, this is designed to be a guide only. Please contact our [Grants & Sponsorship Officer](#) with any additional questions.
- Please also refer to the [Community Grants Guidelines](#) and [Sponsorship Guidelines](#) for full eligibility requirements.

**Entity type**

I am applying as a:

**Eligibility**

Check your eligibility for our different Grants & Sponsorship programs from the list that appears.

**More information**

Want to receive updates about City of Newcastle Grants & Sponsorship programs? Subscribe below to join our mailing list.

### City of Newcastle Grants & Sponsorship Program Legal Entities

When applying for a City of Newcastle grant or sponsorship program, you are required to specify your legal entity type (e.g. sole trader, partnership, company, or not-for-profit organisation) as eligibility and application requirements vary based on the individual grant or sponsorship program.

 **Individual**

Not a registered entity  
Not required to have an Australian Business Number (ABN)  
May be required to be "Auspiced" by a registered business (requirements vary depending on the grant or sponsorship program)

**What does 'Auspiced mean? (Individual Auspiced by eligible entity)**  
City of Newcastle (CN) accepts applications from organisations that are providing auspice arrangements to groups that would otherwise not be eligible for funding. Sometimes individuals, unincorporated groups or newly incorporated associations with great community activity ideas, partner with existing not-for-profit organisations or a business to access funding and help an activity happen in our community. This type of relationship is often called 'auspicing'.

 **Sole Trader (Business)**

An individual running a business  
Operates under their own name or a registered business name  
Required to have an active Australian Business Number (ABN)

 **Company (Business)**

A legal entity registered with the Australian Securities and Investments Commission (ASIC)  
Includes public companies, private (proprietary limited) companies, discretionary investment trust and limited by guarantee companies  
Required to have an active Australian Business Number (ABN)

 **Not-For-Profit Organisation**

Includes legally constituted charities, clubs, associations, and other not-for-profits  
Registered with the Australian Charities and Not-for-profits Commission (ACNC)  
May be required to have an active Australian Business Number (ABN). Requirements vary depending on the grant or sponsorship program

 **Other Types**

Includes incorporated associations, unincorporated associations and volunteer groups  
May be required to have an active Australian Business Number (ABN). Requirements vary depending on the grant or sponsorship program

For more information about our grants or sponsorship program eligibility requirements, please visit [newcastle.nsw.gov.au/community/grants-and-sponsorships](https://newcastle.nsw.gov.au/community/grants-and-sponsorships)

For more information on business structures and legal entities, please visit [business.gov.au](https://business.gov.au)



- Read the Policy and Guidelines closely before completing your application form.
- Ensure the ABN you are providing on the application form is an eligible entity for the program you are applying for. (Use CN's online eligible entity check tool or view the eligible entities guide PDF).
- Demonstrate community support and involvement in your project; collaborations are encouraged.
- Use clear language; avoid abbreviations and jargon.
- Prepare a detailed budget.
- Have someone who doesn't know your project review your application.
- Check out CN's annual priorities (Newcastle 2040) - Community Strategic Plan (CSP) <https://newcastle.nsw.gov.au/about-us/our-responsibilities/newcastle-2040>
- Support your application with data.
- When filling out the budget sections, for income, include the CN grant amount you are requesting in your application.
- If your application is approved, though not for the full requested amount, will your activity still be able to proceed?



# Grants for Community Events

## Definition of Community Events in the Grants Guidelines

Community Events are staged largely for social, fun and entertainment value for the local community. They are targeted primarily at a local audience but may attract from outside the region thereby providing some economic, social and cultural benefits. They may have some wider regional benefits but to a lesser extent than major events.

## Social Inclusion Grants for Community Events

Funding for Community Events in the Social Inclusion stream is only available for gatherings and activities that are designed to build social connections and strengthen the sense of community, belonging and inclusion. Types of Community Events funded under this stream include neighbourhood gatherings, community markets, support expos, community-led/lived experience events. Commercial events are not supported through this program.

# Grant Specific Workshops

## Environment and Sustainability Grants

Our Environment and Sustainability teams will be on hand to shape your project and share ways our visions can align, increasing the chance of your project's success. Bring along photos, maps, drawings, ideas and questions, and we'll brainstorm with you.

- **In person** (12 Stewart Ave, Newcastle West)
- **Tuesday, 27 May (11am – 12pm)** and **Thursday, 29 May (5:30pm - 6:30pm)**
- Register to attend online via CN's grants webpage - <https://newcastle.nsw.gov.au/community/grants-and-sponsorships/grants>

## Social Inclusion Grants

Our Community Planning and Development Team will be available to provide in-depth information about the Social Inclusion Grants, help refine your application ideas and answer any questions you may have.

- **Online** (via Teams)
- **Tuesday, 27 May (5:30pm - 6:30pm)** and **Friday, 30 May (9:30am - 10:30am)**
- Email to attend - [communityadmin@ncc.nsw.gov.au](mailto:communityadmin@ncc.nsw.gov.au)

# Questions?

For further assistance please contact Emmalea Moulton

(Grants & Sponsorship Officer)

[grants@ncc.nsw.gov.au](mailto:grants@ncc.nsw.gov.au) or 4974 2814